

WELLSBORO ELECTRIC COMPANY

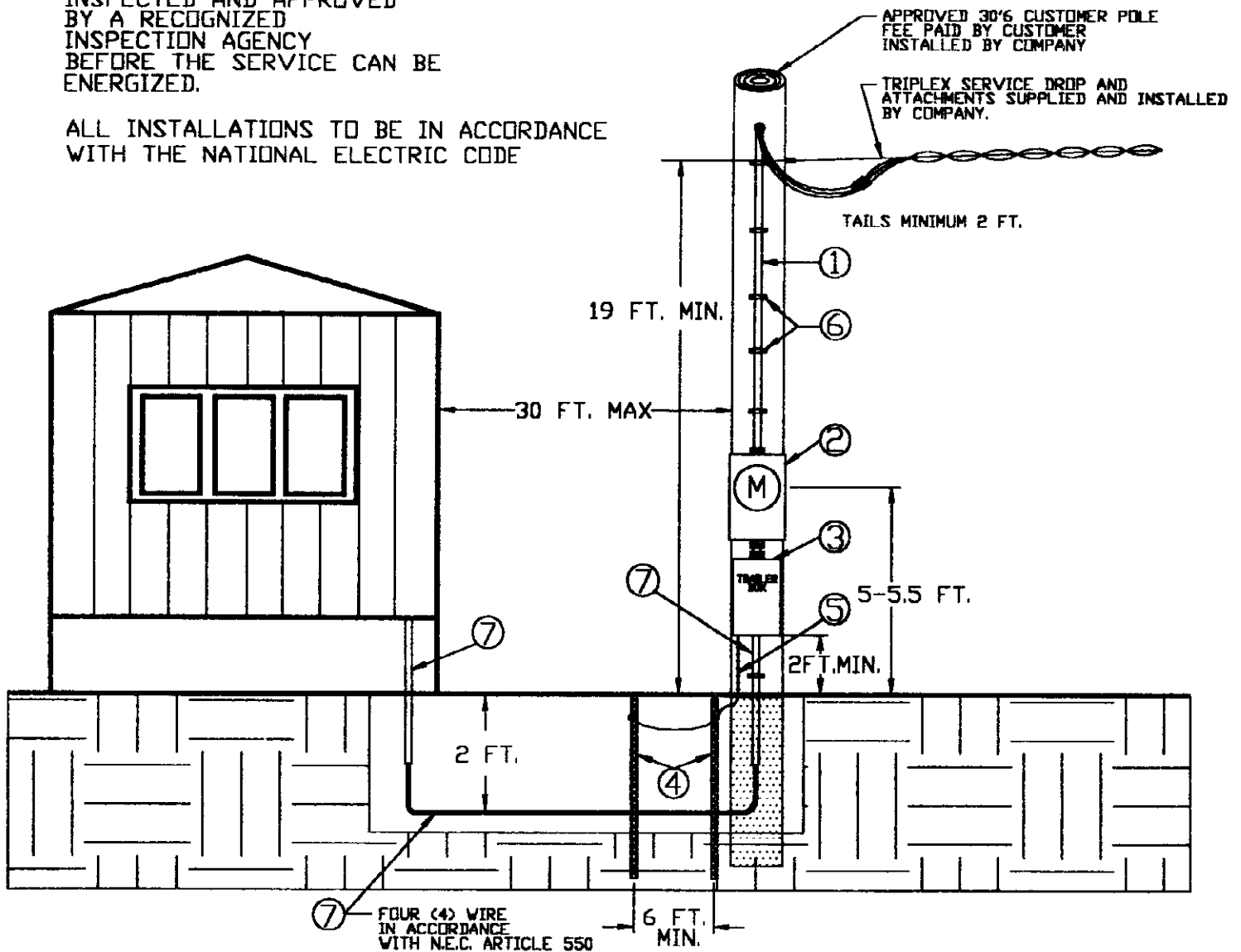
P.O. BOX 138 , 33 AUSTIN STREET
WELLSBORO , PENNSYLVANIA 16901
(570) 724 - 3516

INSTALLATION REQUIREMENTS OF POLE MOUNTED SERVICES FOR MOBILE HOMES AND SIMILAR APPLICATIONS.

IMPORTANT:

ALL INSTALLATIONS MUST BE INSPECTED AND APPROVED BY A RECOGNIZED INSPECTION AGENCY BEFORE THE SERVICE CAN BE ENERGIZED.

ALL INSTALLATIONS TO BE IN ACCORDANCE WITH THE NATIONAL ELECTRIC CODE



FURNISHED AND INSTALLED BY CUSTOMER

- ① ENTRANCE CABLE OR SERVICE ENTRANCE CONDUCTORS IN APPROVED CONDUIT WITH WEATHERHEAD
100 AMP - # 2 ALUMINIUM OR # 4 COPPER
200 AMP - 4/0 ALUMINIUM OR 2/0 COPPER
- ② CUSTOMER OWNED 4 JAW UL APPROVED RINGLESS TYPE METERBASE WITH WEATHER TIGHT HUBS AND BY-PASS HORNS
EITHER PURCHASED FROM COMPANY OR ELECTRICAL SUPPLY COMPANY.
- ③ CUSTOMER OWNED SERVICE EQUIPMENT - MINIMUM 100 AMP WITH 6 BREAKER SPACES MINIMUM.
- ④ TWO (2) 5/8 IN. X 8 FT. COPPERWELD OR GALVANIZED GROUND RODS SPACED A MINIMUM OF 6 FT. APART.
- ⑤ GROUND WIRE # 6 BARE COPPER FOR 100 AMP INSTALLATION AND # 4 BARE COPPER FOR A 200 AMP INSTALLATION.
WHERE AVAILABLE , SERVICE SHOULD ALSO BE GROUNDED TO WELL CASING OR UNDERGROUND METALLIC WATER PIPING SYSTEM.
GAS OR FUEL OIL PIPING SHALL NOT BE USED AS A GROUNDING ELECTRODE. BONDING: SEE N.E.C. ARTICLE 250
- ⑥ CABLE STRAPS TO BE PLACED 6 TO 10 IN. FROM WEATHERHEAD AND METERBASE AND AT THREE (3) FT. INTERVALS-SIX(6) REQD.
- ⑦ CUSTOMER SUPPLIED/INSTALLED CONDUIT WITH 4 WIRE CABLE AT MINIMUM DEPTH OF 2 FEET PRIOR TO INSPECTION.

W-E14
01/2001

WELLSBORO ELECTRIC COMPANY

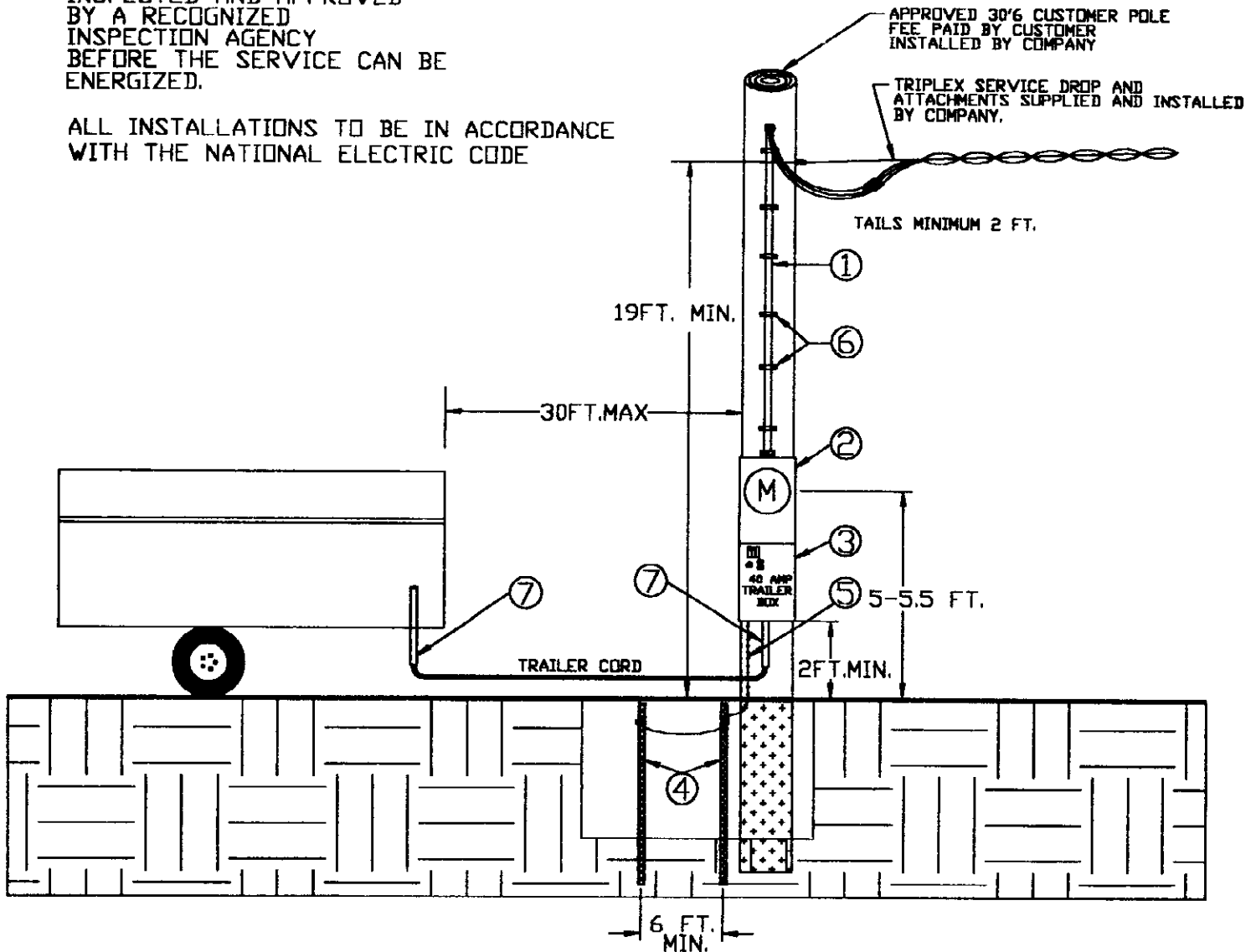
P.O. BOX 138 , 33 AUSTIN STREET
WELLSBORO , PENNSYLVANIA 16901
(570) 724 - 3516

INSTALLATION REQUIREMENTS OF POLE MOUNTED SERVICES FOR CAMPER AND RV OR SIMILAR APPLICATIONS.

IMPORTANT:

ALL INSTALLATIONS MUST BE INSPECTED AND APPROVED BY A RECOGNIZED INSPECTION AGENCY BEFORE THE SERVICE CAN BE ENERGIZED.

ALL INSTALLATIONS TO BE IN ACCORDANCE WITH THE NATIONAL ELECTRIC CODE



FURNISHED AND INSTALLED BY CUSTOMER

- ① ENTRANCE CABLE OR SERVICE ENTRANCE CONDUCTORS IN APPROVED CONDUIT WITH WEATHERHEAD
100 AMP - # 2 ALUMINIUM OR # 4 COPPER
200 AMP - 4/0 ALUMINIUM OR 2/0 COPPER
- ② CUSTOMER OWNED 4 JAW UL APPROVED RINGLESS TYPE METERBASE WITH WEATHER TIGHT HUBS AND BY-PASS HORNS EITHER PURCHASED FROM COMPANY OR ELECTRICAL SUPPLY COMPANY.
- ③ CUSTOMER OWNED SERVICE EQUIPMENT - MINIMUM 40 AMP WITH GFI 120 VOLT CIRCUIT PROTECTION.
- ④ TWO (2) 5/8 IN. X 8 FT. COPPERWELD OR GALVANIZED GROUND RODS SPACED A MINIMUM OF 6 FT. APART.
- ⑤ GROUND WIRE # 6 BARE COPPER FOR 100 AMP INSTALLATION AND # 4 BARE COPPER FOR A 200 AMP INSTALLATION. WHERE AVAILABLE , SERVICE SHOULD ALSO BE GROUNDED TO WELL CASING OR UNDERGROUND METALLIC WATER PIPING SYSTEM. GAS OR FUEL OIL PIPING SHALL NOT BE USED AS A GROUNDING ELECTRODE. BONDING: SEE N.E.C. ARTICLE 250
- ⑥ CABLE STRAPS TO BE PLACED 6 TO 10 IN. FROM WEATHERHEAD AND METERBASE AND AT THREE (3) FT INTERVALS.
- ⑦ CUSTOMER SUPPLIED/INSTALLED CONDUIT IF NEEDED FOR PROTECTION