

WELLSBORO ELECTRIC COMPANY

P.O. BOX 138 , 33 AUSTIN STREET
WELLSBORO , PENNSYLVANIA 16901
(570) 724 - 3516

INSTALLATION REQUIREMENTS OF CENTER LOAD POLE MOUNTED SERVICES ENTRANCE CABLE--GENERATOR SWITCH

IMPORTANT:

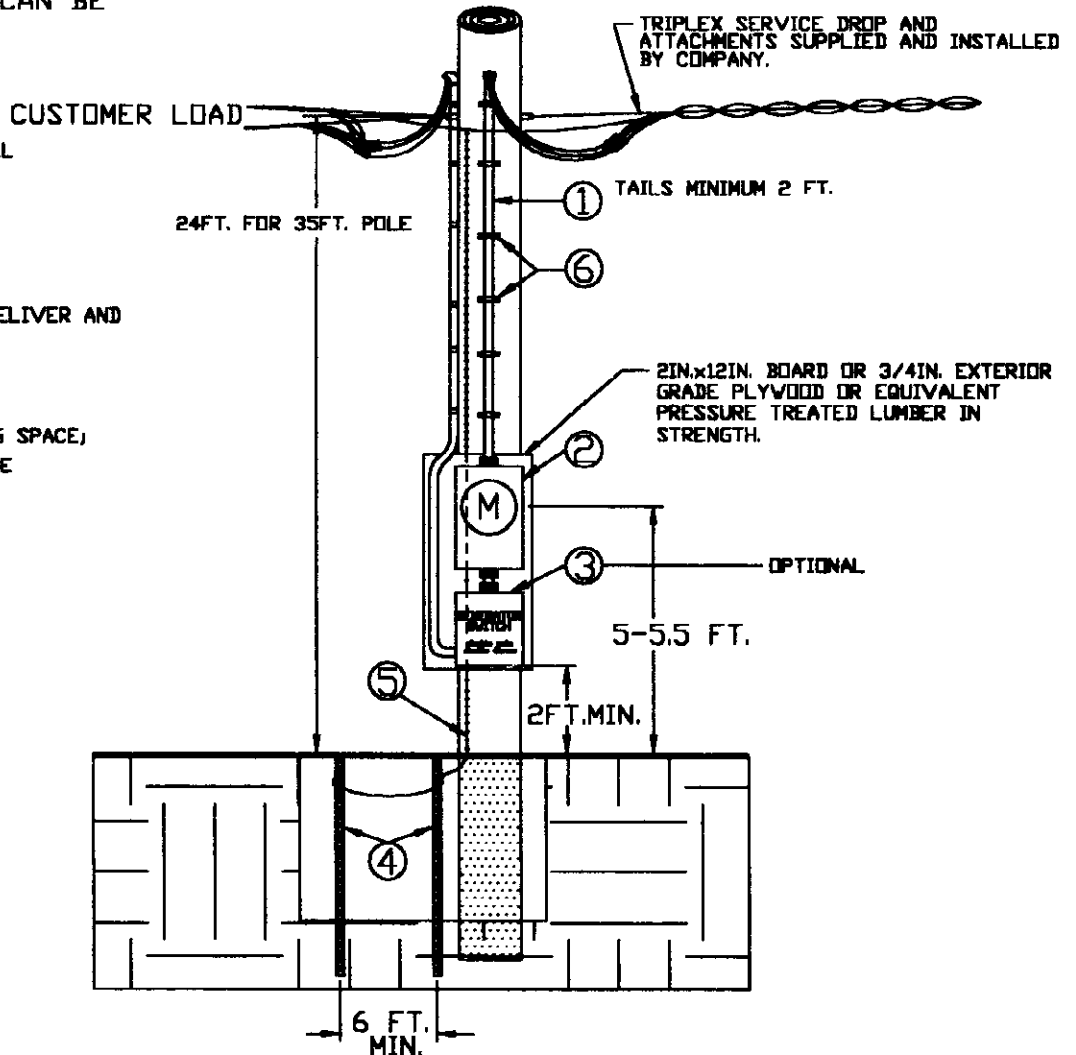
ALL INSTALLATIONS MUST BE INSPECTED AND APPROVED BY A RECOGNIZED INSPECTION AGENCY BEFORE THE SERVICE CAN BE ENERGIZED.

ALL INSTALLATIONS TO BE IN ACCORDANCE WITH THE NATIONAL ELECTRIC CODE

MEMBER TO FURNISH AND INSTALL ALL SERVICE EQUIPMENT

POLE NOTES:

1. WELLSBORO ELECTRIC WILL DELIVER AND INSTALL A POLE , AT MEMBERS EXPENSE , IN ACCORDANCE WITH POLICY 3-1.
2. TO PROVIDE PROPER CLIMBING SPACE, ONE SIDE OF THE POLE IS TO BE LEFT UNOBSTRUCTED.
3. SERVICE LOCATION, POLE HEIGHT AND CLASS TO BE DESIGNATED BY COMPANY.



FURNISHED AND INSTALLED BY CUSTOMER

- ① SERVICE ENTRANCE CONDUCTORS WITH WEATHERHEAD
200 AMP - 4/0 ALUMINUM OR 3/0 COPPER
- ② CUSTOMER OWNED 4 JAW UL APPROVED RINGLESS TYPE METERBASE WITH WEATHER TIGHT HUBS AND BY-PASS HORNS EITHER PURCHASED FROM COMPANY OR ELECTRICAL SUPPLY COMPANY.
- ③ CUSTOMER OWNED SERVICE EQUIPMENT - UL APPROVED OUTDOOR OR ENCLOSED FUSED DISCONNECT SWITCH (OPTIONAL), DOUBLE POLE-DOUBLE THROW GENERATOR SWITCH
- ④ TWO (2) 5/8 IN. X 8 FT. COPPERWELD OR GALVANIZED GROUND RODS SPACED A MINIMUM OF 6 FT. APART.
- ⑤ GROUND WIRE # 4 BARE COPPER MINIMUM FOR A 200 AMP INSTALLATION. WHERE AVAILABLE , SERVICE SHOULD ALSO BE GROUNDED TO WELL CASING OR UNDERGROUND METALLIC WATER PIPING SYSTEM. GAS OR FUEL OIL PIPING SHALL NOT BE USED AS A GROUNDING ELECTRODE. BONDING: SEE N.E.C. ARTICLE 250
- ⑥ PIPE STRAPS TO BE PLACED 6 TO 10 IN. FROM WEATHERHEAD AND METERBASE AND AT THREE (3) FT. INTERVALS--SIX(6) REQD.

MATERIAL REFERENCE: M8-9B

W-E111
01/2001