

# WELLSBORO ELECTRIC COMPANY

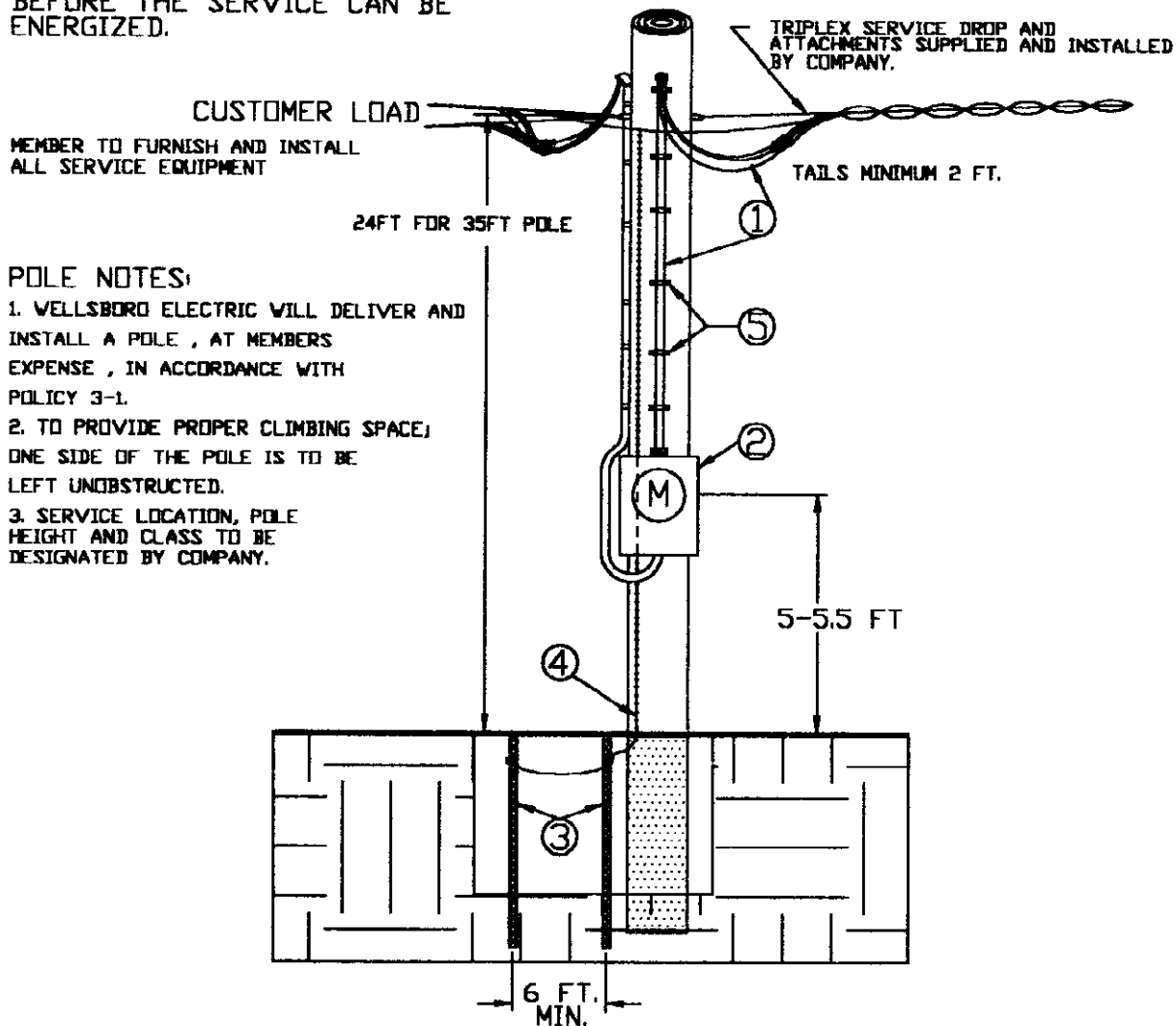
P.O. BOX 138 , 33 AUSTIN STREET  
WELLSBORO , PENNSYLVANIA 16901  
(570) 724 - 3516

## INSTALLATION REQUIREMENTS OF CENTER LOAD POLE MOUNTED SERVICES-CABLE

### IMPORTANT:

ALL INSTALLATIONS MUST BE INSPECTED AND APPROVED BY A RECOGNIZED INSPECTION AGENCY BEFORE THE SERVICE CAN BE ENERGIZED.

ALL INSTALLATIONS TO BE IN ACCORDANCE WITH THE NATIONAL ELECTRIC CODE



### POLE NOTES:

1. WELLSBORO ELECTRIC WILL DELIVER AND INSTALL A POLE , AT MEMBERS EXPENSE , IN ACCORDANCE WITH POLICY 3-1.
2. TO PROVIDE PROPER CLIMBING SPACE; ONE SIDE OF THE POLE IS TO BE LEFT UNOBSTRUCTED.
3. SERVICE LOCATION, POLE HEIGHT AND CLASS TO BE DESIGNATED BY COMPANY.

### FURNISHED AND INSTALLED BY CUSTOMER

- ① ENTRANCE CABLE WITH WEATHERHEAD  
200 AMP - 4/0 ALUMINUM OR 3/0 COPPER
- ② CUSTOMER OWNED 4 JAW UL APPROVED RINGLESS TYPE 200 AMP OVERHEAD METERBASE WITH BY-PASS HORNS  
EITHER PURCHASED FROM COMPANY OR ELECTRICAL SUPPLY COMPANY.
- ③ TWO (2) 5/8 IN. X 8 FT. COPPERWELD OR GALVANIZED GROUND RODS SPACED A MINIMUM OF 6 FT. APART.
- ④ GROUND WIRE # 4 BARE COPPER MINIMUM FOR A 200 AMP INSTALLATION.  
WHERE AVAILABLE , SERVICE SHOULD ALSO BE GROUNDED TO WELL CASING OR UNDERGROUND METALLIC WATER PIPING SYSTEM.  
GAS OR FUEL OIL PIPING SHALL NOT BE USED AS A GROUNDING ELECTRODE. BONDING: SEE N.E.C. ARTICLE 250
- ⑤ CABLE STRAPS TO BE PLACED 6 TO 10 IN. FROM WEATHERHEAD AND METERBASE AND AT THREE (3) FT. INTERVALS-SIX(6) REQD.

MATERIAL REFERENCE: M8-9A

W-E110  
01/2001